

# PRODUCT CATALOGUE

Exploring Life Sciences  
Serving Human Health

# Suzhou CellPro Biotechnology Co., Ltd.



Suzhou CellPro Biotechnology Co., Ltd. was established in 2018, specialized in the research and development, production and sales of high-end biomedical consumables.

CellPro is committed to providing global customers with high-quality consumables and customized services in Liquid Handling, Molecular Biology, Cell Culture, Immunotherapy, Biopharmaceuticals, etc.

CellPro currently has more than 400 employees, with plant of 50,000 m<sup>2</sup>, 9,000 m<sup>2</sup> cleanroom of ISO Class 8, 5,500m<sup>2</sup> cleanroom of ISO Class 7, 1,800 m<sup>2</sup> GMP cleanroom and gained more than 80 patents.



## R & D Driving

CellPro established a professional gene amplification laboratory, cell culture laboratory, microbiology laboratory, robotic tips compatible experiment laboratory, etc., which can conduct one-stop biological performance verification and integrated research and development of consumables, reagents and instruments.

## Production Supporting

Advanced equipment, imported high-quality raw materials to ensure the stability of quality.

With 100+ Fully automated production lines. They are all used of FANUC, ARBURG, ENGEL, TOYO and other imported injection molding machines and Davis Standard extruders to escort production and production capacity.

## Quality System

The products are certified by TUV ISO13485, ISO9001, ISO14001 and medical device products passed CE-MDR and FDA standard gained.

## Customized Service

CellPro possess high-precision mold research and development center. CellPro is capacity for independently completing the whole process of product research and development, mold design and manufacturing, precision machining and plastic molding, process customization, biological verification, large-scale production. Externally, we can meet the needs of biomedical companies for new product development and customzid production.

## Sales Service

CellPro has built a global distribution network.

Headquarters located in Suzhou, China.

Established North American sales center in the United States.

International sales center in Dubai, covering more than 50 countries and regions including Southeast Asia, South Asia, Europe, the Middle East, and North Africa. The establishment of an international warehouse and international logistics in Dubai has greatly improved the sourcing experience of our global customers and our service capabilities.







## Liquid Handling

Pipette Tips	06
CLT Universal Pipette Tips	12
RN Pipette Tips	15
Tecan Robotic Tips	19
PerkinElmer Robotic Tips	23
Hamilton Robotic Tips	25
Beckman Robotic Tips	27
Robotic Reservoirs	29
Reagent Reservoirs	30

## Molecular Detection

96-well PCR Plates	31
384-well PCR Plates	32
PCR 8-strip Tubes and Caps	33
PCR Tubes with Attached Flat Cap	33
Optical Adhesive Film	34
Adhesive PCR plate seals	34
Sealing Foil	35

## Centrifuge Tubes

15/50 mL Centrifuge Tubes	36
Micro Centrifuge Tubes	37
Centrifuge Bottles	37
Low Retention Micro Centrifuge Tubes	38
Safe-Lock Micro Centrifuge Tubes	39

## Sample Storage &amp; Freezing

Screw Cap Micro Tubes	40
Cryogenic Vials	44

## Cell Culture

Cell Culture Plates	45
96-Well Round (U) Bottom Cell Culture	
Flasks	46
U-Shaped Cell Culture Flasks	47
Cell Culture Dishes	48
Serological Pipettes	48
Erlenmeyer Flasks	49

## Immunoassay

Elisa MicroPlates	50
96 Well Microplates	50

## Microbial Culture

Petri Dish	51
------------	----

## Nucleic Acid Extraction/Virus Sampling

96-well Deep Well Plates	51
96-well Deep Well Tip Combs	52
Transport Tubes	52
Nasal/Throat Sampling Collectors	52
Sampling Collection Kits	53
Saliva Sampling Collectors	53

## PremPette Mechanical Pipettes

0.5-10 µL/20-200 µL/100-1000 µL	55
---------------------------------	----

## Reagent Reservoirs

Disposable reagent reservoirs are manufactured with polystyrene and fit all multichannel pipettors. Four pour-off corners and a sharp v-bottom to ensure maximum sample retrieval.

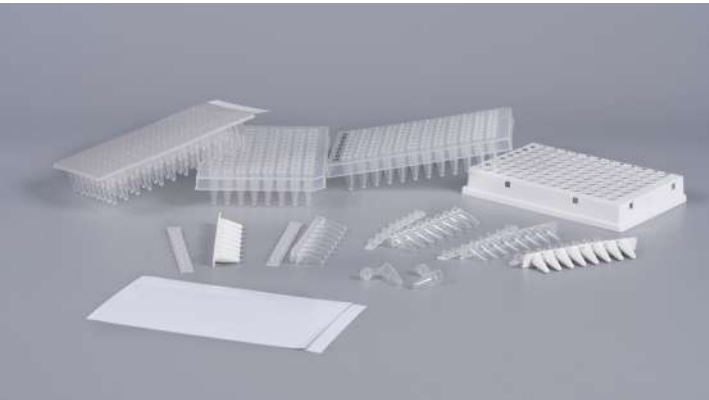


### Features

- Extra-wide base adds rigidity and stability to reservoir, helping to avoid spills
- Pour-off spouts on all four corners reduce spillage when pouring reagents out of reservoir
- Graduations on inside wall enable quick measurement of remaining liquid
- 25 mL, 65 mL divided reservoir allows the pipetting of two different reagents

P / N	Capacity	Sterile	Configuration
819006	10 mL	No	300 pcs/case, Bulk
819007	10 mL	Yes	1 pc/pack, 100 packs/case, Individually Wrapped, Sterile
819008	65 mL	No	100 pcs/case, Bulk
819009	65 mL	Yes	1 pc/pack, 100 packs/case, Individually Wrapped, Sterile
819010	50 mL	Yes	1 pc/pack, 100 packs/case, Individually Wrapped, Sterile
819010P01	50 mL	Yes	5 pcs/pack, 40 packs/case, Bulk, Sterile
819011	50 mL	No	100 pcs/case, Bulk
819012	25 mL	Yes	1 pc/pack, 100 packs/case, Individually Wrapped, Sterile
819013	25 mL	No	100 pcs/case, Bulk
819014	100 mL	No	100 pcs/case, Bulk
819015	100 mL	Yes	1 pc/pack, 100 packs/case, Individually Wrapped, Sterile
819015P01	100 mL	Yes	10 pcs/pack, 10 packs/case, Bulk, Sterile

## PCR Tubes and Plates



### Features

- Made of medical grade imported polypropylene (PP)
- Qualified injection molding technology and independent mold design technology
- Thin wall and uniform in thickness
- ISO-8 Cleanroom Production, DNA-free, DNase/RNase-free, Pyrogen/Endotoxin-free

## 96-Well PCR Plates



96-Well, flat top PCR microplate is designed to fit standard 96 well blocks. Ultra-thin and consistent wall thickness allows precise thermal transfer for optimum results. Can be sealed with 8/12 strip caps, or sealing film.

### Features

- Suitable for 0.1 mL/0.2 mL thermal cycler blocks
- Application: PCR, qPCR/Real-Time PCR

### 96-Well PCR plates

P / N	Capacity/μL	Cut corner	Color	Skirt Style	Configuration
802019	100	A12/H12	Clear	Non-skirted, Black Lettering	10 plates/pack, 5 packs/case
802020	100	A12/H12	White	Non-skirted, Black Lettering	10 plates/pack, 5 packs/case
802016	200	A12	Clear	Semi-skirted, Black Lettering	10 plates/pack, 5 packs/case
802017	200	H1	Clear	Non-skirted, Black Lettering	10 plates/pack, 5 packs/case
802018	200	H1	White	Non-skirted, Black Lettering	10 plates/pack, 5 packs/case
802032	100	H1	White	Skirted, Black Lettering	10 plates/pack, 5 packs/case
802033	100	H1	Clear	Skirted, Black Lettering	10 plates/pack, 5 packs/case



96-Well PCR Microplate Compatible with Roche Light Cycler 480 without Sealing Films, Non-sterile

P / N	Capacity/μL	Cut corner	Color	Skirt Style	Configuration
802034	100	H12	Clear	Semi-skirted	10 plates/pack, 5 packs/case
802035	100	H12	White	Semi-skirted	10 plates/pack, 5 packs/case

96-Well Polypropylene PCR Microplate, Compatible with ABI, Semi-skirted, Non-sterile

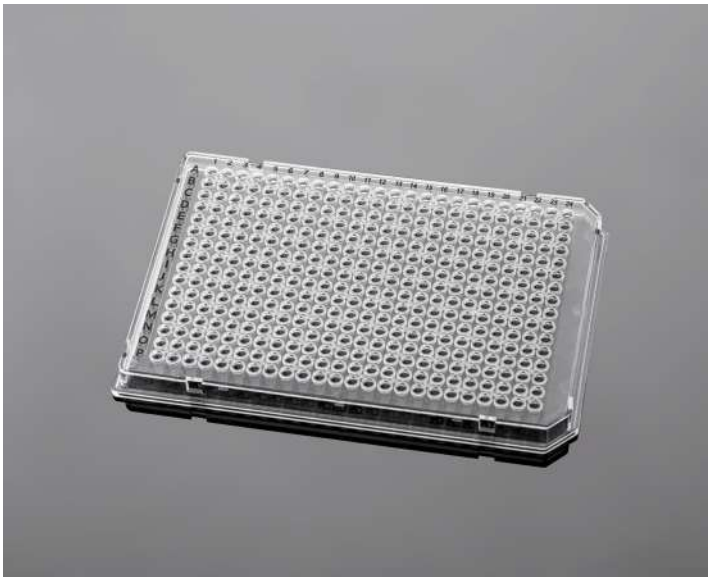
P / N	Capacity/μL	Cut corner	Color	Skirt Style	Configuration
802040	100	A1	Clear	Semi-skirted	10 plates/pack, 5 packs/case
802041	200	A12	Clear	Semi-skirted	10 plates/pack, 5 packs/case

96-Well Polypropylene PCR Microplate, Skirted, Non-sterile

P / N	Capacity/μL	Cut corner	Tube Color	Shell Color	Skirt Style	Configuration
802045	100	H1	Clear	Blue	Skirted	10 plates/pack, 5 packs/case
802046	100	H1	White	Blue	Skirted	10 plates/pack, 5 packs/case
802047	100	H1	Clear	White	Skirted	10 plates/pack, 5 packs/case
802048	100	H1	White	White	Skirted	10 plates/pack, 5 packs/case

384-Well PCR Plates

384-Well PCR Plates are compatible with most 384-module PCR instruments and sequencing instruments, are suitable for high-throughput automated systems, and have notch at the A24&P24 position.



Features

- Fully skirt design suitable for automated operation
- Ideal for high-throughput systems
- Material with uniform, thin walls maximize consistent heat transfer to and from the reaction samples
- Fits standard 384-well modules and is compatible with most thermal cycler systems
- 40 μL maximum well capacity, 25 μL maximum working capacity
- DNA-free, DNase/RNase-free, Pyrogen/Endotoxin-free
- A raised rim around the wells enables secure sealing with film and safeguards against evaporation

384-Well PCR plates

P / N	Capacity/μL	Cut corner	Tube Color	Shell Color	Skirt Style	Configuration
802049	40	A24&P24	Clear	White	Skirted	10 plates/pack, 5 packs/case
802052	40	A24&P24	Clear	Clear	Skirted	10 plates/pack, 5 packs/case
802053	40	A24&P24	White	Clear	Skirted	10 plates/pack, 5 packs/case

PCR 8-strip Tubes and Caps



Features

- Made of medical grade imported polypropylene (PP)
- Qualified injection molding technology and independent mold design technology
- Thin wall and uniform in thickness
- ISO-8 Cleanroom Production, DNA-free, DNase/RNase-free, Pyrogen/Endotoxin-free

Type	P / N	Capacity/μL	Description	Tube Color	Cap Color	Configuration
A	802002-00	200	8-strip, Flat Cap	Clear	Clear	125 strips/pack, 10 packs/case
A	802005-00	100	8-strip, Flat Cap	Clear	Clear	125 strips/pack, 10 packs/case
A	802006-00	100	8-strip, Flat Cap	White	Clear	125 strips/pack, 10 packs/case
B	802022-00	200	8-strip, Flat Cap	Clear	Clear	125 strips/pack, 10 packs/case
B	802024-00	100	8-strip, Flat Cap	Clear	Clear	125 strips/pack, 10 packs/case
B	802025-00	100	8-strip, Flat Cap	White	Clear	125 strips/pack, 10 packs/case
C	802007B	200	8-strip, Attached Flat Cap	Clear	Clear	120 strips/pack, 10 packs/case

PCR Tubes with Attached Flat Cap



Made of virgin polypropylene and designed for precise fit in heat blocks to optimize heat transfer. The tubes are cleanroom produced, ensuring that they are free from contaminants that could affect experimental results.

P / N	Capacity /μL	Closure Type	Color	Configuration
802001	200	Flat Cap	Clear	1000 tubes/box, 10 boxes/case
802051	500	Flat Cap	Clear	500 tubes/box, 10 boxes/case

Optical Adhesive Film

PCR Sealing Film reduces the chance of well-to-well contamination and sample evaporation when applied to a microplate. Prevent Loss of Precious Samples.

Use this optically-clear adhesive film to seal the samples into the wells of a microplate. This will reduce the possibility of cross contamination between sample wells and help ensure consistent Real-Time PCR data.

For Research Use Only. Not for use in diagnostic procedures.

Easy to Use.

Simply peel the backing away from the adhesive film and apply firmly across the top of your microplate. Stack microplates and read samples as you would normally except with less chance of sample contamination. Designed to fit on 96-well and 384-well plates.



- Features
- Pressure-sensitive adhesive provides a tight seal over every well
  - Will not interfere with sample reading
  - Press-N-Seal: Align properly to the plate, then press to seal
  - Easy to apply-will not stick to your glove

P / N	Description	Configuration
802021B02	Optical, ABI, Pressure sensitive	100 pcs/pack
802021B03	Optical, Easily simply, Pressure sensitive	100 pcs/pack

Adhesive PCR plate seals

The transparent adhesive film firmly seals the sample in the wells, reducing sample leakage, evaporation, and contamination between wells.

The adhesive film is firmly adhered to the well plate by removing the adhesive film backing and grasping the sides to align and secure the adhesive film to the well plate. Once sealed, it can be safely stacked without worrying about contamination.



- Features
- Self-adhesive, manual lamination
  - Both sides can be peeled, easy to operate
  - Easy to remove, no residue
  - No reaction with experimental samples
  - High transparency and good sealing

Adhesive PCR plate seals

P / N	Description	Configuration
802021E01	Adhesive Transparent Sealing Film, Clear, 142×80 mm	100 pcs/pack

Sealing Foils



- Features
- Good alcohol resistance and good chemical corrosion resistance
  - Easy to tear while ensuring sealing performance
  - Withstands a wide temperature range and has been tested by extreme temperature tests and long-term tests
  - The sealing surface is clean and tidy without residue
  - Strict batch management ensures product quality

Sealing Foils

P / N	Surface texture	Application	Features	Size/mm	Configuration
BM0001A	smooth	Sample Storage	Sample shading protection, strong chemical resistance	130*90*0.115	100 pcs/pack
BM0002A	smooth	Sample Storage	Sample shading protection, strong chemical resistance	125*85*0.115	100 pcs/pack
BM0003A	smooth	Sample Storage	Sample shading protection, strong chemical resistance	125*81.5*0.115	100 pcs/pack
BM0001B	Embossing	Sample Storage	Sample shading protection, strong chemical resistance	130*90*0.115	100 pcs/pack
BM0002B	Embossing	Sample Storage	Sample shading protection, strong chemical resistance	125*85*0.115	100 pcs/pack
BM0003B	Embossing	Sample Storage	Sample shading protection, strong chemical resistance	125*81.5*0.115	100 pcs/pack

Sealing Foils-Easy Pierce

P / N	Application	Features	Size/mm	Configuration
802021D01	Sample Storage	Sample shading protection, strong chemical resistance	125*85*0.055	100 pcs/pack

Centrifuge Tubes

Conical Sterile Polypropylene Centrifuge Tubes are premium, high-quality conical tubes that are environmentally friendly, allow for increased traceability with the largest writing area on the market.

Centrifuge tubes are made from high-purity resins and molded using our state-of-the-art processes. Centrifuge tubes is a safer alternative to glass without sacrificing accuracy. Centrifuge tubes feature are black-printed graduations and a large white marking spot.

Sterile,DNase/RNase-free, Nonpyrogenic.

15 mL & 50 mL Centrifuge Tubes



- Black printed graduations with a large white marking spot
- Maximum RCF is 12,000 xg
- Sterile, nonpyrogenic and DNase/RNase-free
- Convenient and safe cell culture applications
- Sample preparation in microbiology and molecular biology labs
- Storage of samples and solution with larger volumes
- Preparation of master mixes and buffers

P/N	Capacity	Tube Color	Description	Configuration
801151	15 mL	Clear	Bulk, Sterile	25 tubes/pack, 20 packs/case
801152P01	15 mL	Clear	Rack Packed, Sterile	25 tubes/rack, 20 racks/case
801156	15 mL	Amber	Bulk, Sterile	25 tubes/pack, 20 packs/case
801501	50 mL	Clear	Bulk, Sterile	25 tubes/pack, 20 packs/case
801502P01	50 mL	Clear	Rack Packed, Sterile	25 tubes/rack, 20 racks/case
801506	50 mL	Amber	Bulk, Sterile	25 tubes/pack, 20 packs/case



15 & 50 mL Amber Centrifuge Tubes



15 mL Rack Packed Centrifuge Tubes



50 mL Rack Packed Centrifuge Tubes

SnapLock Micro Centrifuge Tube



- Snap lock Microtubes have frosted cap surfaces for labeling, frosted panels on the side for writing
- Withstand up to 14,000 xg RCF
- Snap lock cap assures efficient seal
- Thin membrane in cap center allows easy access to sample by syringe needle
- DNase/RNase-free, Nonpyrogenic

P/N	Capacity	Format	Color	Configuration
801141	0.6 mL	Bulk	Clear	1000 tubes/pack, 10 packs/case
801161	1.5 mL	Bulk	Clear	500 tubes/pack, 10 packs/case
801181	2.0 mL	Bulk	Clear	500 tubes/pack, 10 packs/case
801142	0.6 mL	Irradiation-resistant, Bulk	Clear	1000 tubes/pack, 10 packs/case
801162	1.5 mL	Irradiation-resistant, Bulk	Clear	500 tubes/pack, 10 packs/case
801182	2.0 mL	Irradiation-resistant, Bulk	Clear	500 tubes/pack, 10 packs/case
801143	0.6 mL	Low Retention, Bulk	Clear	1000 tubes/pack, 10 packs/case
801163	1.5 mL	Low Retention, Bulk	Clear	500 tubes/pack, 10 packs/case
801183	2.0 mL	Low Retention, Bulk	Clear	500 tubes/pack, 10 packs/case

Centrifuge Bottles



Polypropylene (PP) centrifuge bottles are ideal for applications requiring large volume centrifugation.

Features

- High Density Polyethylene plug seal caps
- Maximum RCF of 6,000 xg
- Bottles are sterile and nonpyrogenic

P/ N	Capacity	Type	Configuration
806001	500 mL	Conical, Plug sealed cap	2 pcs/bag, 20 bags/case
806002	250 mL	Conical, Plug sealed cap	4 pcs/bag, 25 bags/case



Low Retention Micro Centrifuge Tubes

Low Retention centrifuge tubes are preferably made of virgin PP, a special process for centrifuge tubes that significantly improves sample storage efficiency and higher recovery rates. No surface coating to reduce interference with the sample. Highly transparent, the tubes come with a scale and frosted writing area for easy marking and observation of the liquid volume.



Features

- Low DNA/Protein-binding
- Good sealing, repeated opening and closing of the cap, greater reduction in evaporation
- Sterile
- DNase/RNase-free, Non PCR inhibitors, Non pyrogen
- Temperature Range: -80°C to 121°C
- Will withstand up to 14,000 xg RCF



Applications

Low Protein-binding Micro Centrifuge Tube: preparation and storage of proteins, peptides or antibodies, enzymatic reactions, storage of viruses to prevent reduction of virus titres, storage of cell suspensions.

Low DNA-binding Micro Centrifuge Tube: DNA solution dilution, DNA solution preservation, extraction and purification process of DNA sample.

P / N	Capacity	Description	Sterile	Configuration
801167	1.5 mL	Low DNA-binding, Clear	Yes	10 pcs/bag, 10 bags/pack, 10 packs/case
801168	1.5 mL	Low Protein-binding, Clear	Yes	10 pcs/bag, 10 bags/pack, 10 packs/case
801187	2.0 mL	Low DNA-binding, Clear	Yes	10 pcs/bag, 10 bags/pack, 10 packs/case
801188	2.0 mL	Low Protein-binding, Clear	Yes	10 pcs/bag, 10 bags/pack, 10 packs/case

Safe-Lock Micro Centrifuge Tubes

Imported high-purity polypropylene (PP) raw materials, in line with the USP Class-IV standard, does not contain heavy metal ions.

One-piece tube and cover, stable connection, can be repeatedly opened and closed without breakage. With safe-lock design, good sealing, effectively prevents the bursting of lid.

The tube has a frosted writing surface, convenient for sample marking. High transparency for clear and easy observation.



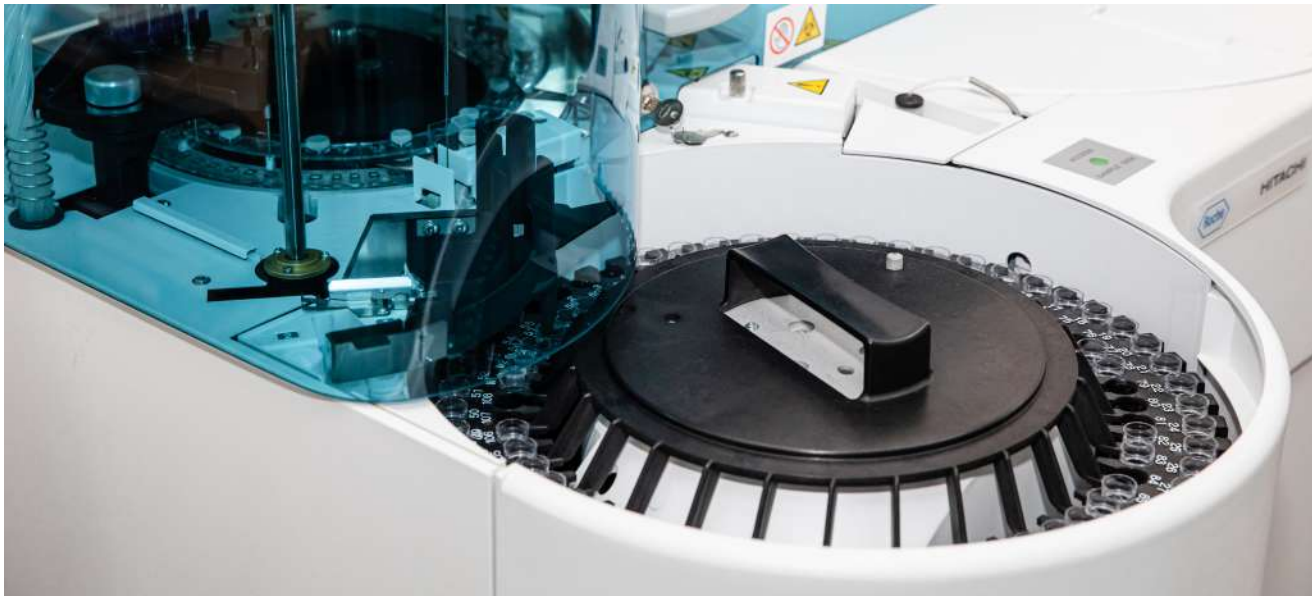
Features

- Withstand speeds up to 14,000 xg RCF
- DNase/RNase-free, Non pyrogen
- With safe-lock design
- Can be operated with one hand for efficiency

Applications

Routine as well as demanding laboratory uses, including centrifugation, heating, incubation, freezing or sample storage.

P / N	Capacity	Sterile	Radiation resistance	Configuration
801191	1.5 mL	No	No	500 pcs/pack, 10 packs/case
801192	1.5 mL	No	Yes	500 pcs/pack, 10 packs/case
801196	1.5 mL	Yes	Yes	500 pcs/pack, 10 packs/case





Screw Cap Micro Tubes



- Screw cap tubes are available in a variety of colors with a conical or self-standing bottom
  - Colored-cap versions are available
  - Manufactured from high-clarity, ultra-pure polypropylene
  - Suitable for a wide range of temperatures-from -80 °C to 120°C.
- Note: not suitable for immersion in liquid nitrogen
- Ideal for boiling applications
  - Certified free of detectable RNase, DNase, DNA, PCR inhibitors, and tested pyrogen-free
  - Maximum RCF is 20,000 xg

Screw Cap Micro Tubes, Type S with Cap Assembled

P / N	Volume	Tube Color	Cap Color	Type	Configuration
801205	0.5 mL	Clear	Clear	Skirted Base	100 tubes/pack, 10 packs/case
801207	1.5 mL	Clear	Clear	Skirted Base	100 tubes/pack, 10 packs/case
801209	2.0 mL	Clear	Clear	Skirted Base	100 tubes/pack, 10 packs/case
801275	0.5 mL	Amber	Amber	Skirted Base	100 tubes/pack, 10 packs/case
801285	1.5 mL	Amber	Amber	Skirted Base	100 tubes/pack, 10 packs/case
801295	2.0 mL	Amber	Amber	Skirted Base	100 tubes/pack, 10 packs/case
8801101	0.5 mL	Clear	Clear	Conical Base	100 tubes/pack, 10 packs/case
8801201	1.5 mL	Clear	Clear	Conical Base	100 tubes/pack, 10 packs/case
8801301	2.0 mL	Clear	Clear	Conical Base	100 tubes/pack, 10 packs/case
8801111	0.5 mL	Amber	Amber	Conical Base	100 tubes/pack, 10 packs/case
8801211	1.5 mL	Amber	Amber	Conical Base	100 tubes/pack, 10 packs/case
8801311	2.0 mL	Amber	Amber	Conical Base	100 tubes/pack, 10 packs/case



Type S 0.5mL



Type S 1.5mL



Type S 2.0mL



Type S with Amber



Type S with Skirted Base, Cap Attached



Type S with Conical Base, Cap Attached



Type S with Conical Base



Type S with Conical Base and Amber Tube, Loop Cap Attached

Screw Cap Micro Tubes, Type S with Cap Attached

P / N	Volume	Tube Color	Cap Color	Type	Configuration
8800801	0.5mL	Clear	Clear	Skirted Base	100 tubes/pack, 10 packs/case
8800901	1.5mL	Clear	Clear	Skirted Base	100 tubes/pack, 10 packs/case
8801001	2.0mL	Clear	Clear	Skirted Base	100 tubes/pack, 10 packs/case
8800811	0.5mL	Amber	Amber	Skirted Base	100 tubes/pack, 10 packs/case
8800911	1.5 mL	Amber	Amber	Skirted Base	100 tubes/pack, 10 packs/case
8801011	2.0 mL	Amber	Amber	Skirted Base	100 tubes/pack, 10 packs/case
8800501	0.5 mL	Clear	Clear	Conical Base	100 tubes/pack, 10 packs/case
8800601	1.5 mL	Clear	Clear	Conical Base	100 tubes/pack, 10 packs/case
8800701	2.0 mL	Clear	Clear	Conical Base	100 tubes/pack, 10 packs/case
8800511	0.5 mL	Amber	Amber	Conical Base	100 tubes/pack, 10 packs/case
8800611	1.5 mL	Amber	Amber	Conical Base	100 tubes/pack, 10 packs/case
8800711	2.0 mL	Amber	Amber	Conical Base	100 tubes/pack, 10 packs/case

Screw Cap Micro Tubes, Type S Low Retention with Cap Attached

P / N	Volume	Tube Color	Cap Color	Type	Configuration
801322	0.5 mL	Clear	Clear	Skirted base, Low DNA adsorption	100 tubes/pack, 10 packs/case
801325	0.5 mL	Clear	Clear	Skirted base, Low protein adsorption	100 tubes/pack, 10 packs/case
801323	1.5 mL	Clear	Clear	Skirted base, Low DNA adsorption	100 tubes/pack, 10 packs/case
801326	1.5 mL	Clear	Clear	Skirted base, Low protein adsorption	100 tubes/pack, 10 packs/case
801324	2.0 mL	Clear	Clear	Skirted base, Low DNA adsorption	100 tubes/pack, 10 packs/case
601327	2.0 mL	Clear	Clear	Skirted base, Low protein adsorption	100 tubes/pack, 10 packs/case





Screw Cap Micro Tubes, Type A with Cap Assembled

P / N	Volume	Tube Color	Cap Color	Type	Configuration
801205A	0.5 mL	Clear	Clear	Skirted Base	100 tubes/pack, 10 packs/case
801207A	1.5 mL	Clear	Clear	Skirted Base	100 tubes/pack, 10 packs/case
801209A	2.0 mL	Clear	Clear	Skirted Base	100 tubes/pack, 10 packs/case
801275A	0.5 mL	Amber	Amber	Skirted Base	100 tubes/pack, 10 packs/case
801285A	1.5 mL	Amber	Amber	Skirted Base	100 tubes/pack, 10 packs/case
801295A	2.0 mL	Amber	Amber	Skirted Base	100 tubes/pack, 10 packs/case
8801101A	0.5 mL	Clear	Clear	Conical Base	100 tubes/pack, 10 packs/case
8801201A	1.5 mL	Clear	Clear	Conical Base	100 tubes/pack, 10 packs/case
8801301A	2.0 mL	Clear	Clear	Conical Base	100 tubes/pack, 10 packs/case
8801111A	0.5 mL	Amber	Amber	Conical Base	100 tubes/pack, 10 packs/case
8801211A	1.5 mL	Amber	Amber	Conical Base	100 tubes/pack, 10 packs/case
8801311A	2.0 mL	Amber	Amber	Conical Base	100 tubes/pack, 10 packs/case

Screw Cap Micro Tubes, Type A with Cap Attached

P / N	Volume	Tube Color	Cap Color	Type	Configuration
8800801A	0.5mL	Clear	Clear	Skirted Base	100 tubes/pack, 10 packs/case
8800901A	1.5mL	Clear	Clear	Skirted base	100 tubes/pack, 10 packs/case
8801001A	2.0mL	Clear	Clear	Skirted Base	100 tubes/pack, 10 packs/case
8800811A	0.5mL	Amber	Amber	Skirted Base	100 tubes/pack, 10 packs/case
8800911A	1.5 mL	Amber	Amber	Skirted Base	100 tubes/pack, 10 packs/case
8801011A	2.0 mL	Amber	Amber	Skirted Base	100 tubes/pack, 10 packs/case
8800501A	0.5 mL	Clear	Clear	Conical Base	100 tubes/pack, 10 packs/case
8800601A	1.5 mL	Clear	Clear	Conical Base	100 tubes/pack, 10 packs/case
8800701A	2.0 mL	Clear	Clear	Conical Base	100 tubes/pack, 10 packs/case
8800511A	0.5 mL	Amber	Amber	Conical Base	100 tubes/pack, 10 packs/case
8800611A	1.5 mL	Amber	Amber	Conical Base	100 tubes/pack, 10 packs/case
8800711A	2.0 mL	Amber	Amber	Conical Base	100 tubes/pack, 10 packs/case

Screw Cap Micro Tubes, Type A Low Retention with Cap Attached

P / N	Volume	Tube Color	Cap Color	Type	Configuration
801322A	0.5 mL	Clear	Clear	Skirted base, Low DNA adsorption	100 tubes/pack, 10 packs/case
801325A	0.5 mL	Clear	Clear	Skirted base, Low protein adsorption	100 tubes/pack, 10 packs/case
801323A	1.5 mL	Clear	Clear	Skirted base, Low DNA adsorption	100 tubes/pack, 10 packs/case
801326A	1.5 mL	Clear	Clear	Skirted base, Low protein adsorption	100 tubes/pack, 10 packs/case
801324A	2.0 mL	Clear	Clear	Skirted base, Low DNA adsorption	100 tubes/pack, 10 packs/case
601327A	2.0 mL	Clear	Clear	Skirted base, Low protein adsorption	100 tubes/pack, 10 packs/case

Screw Cap Micro Tubes, Type S with Cap Assembled

P / N	Cap Color	Configuration
801204	Clear	100 caps/pack, 10 packs/case
801220	Red	100 caps/pack, 10 packs/case
801221	Blue	100 caps/pack, 10 packs/case
801222	Green	100 caps/pack, 10 packs/case
801229	Amber	100 caps/pack, 10 packs/case
801230	Orange	100 caps/pack, 10 packs/case
801231	Yellow	100 caps/pack, 10 packs/case
801235	White	100 caps/pack, 10 packs/case
801236	Violet	100 caps/pack, 10 packs/case
801237	Pink	100 caps/pack, 10 packs/case

Screw Cap Micro Tubes, Type A with Cap Assembled

P / N	Cap Color	Configuration
801204A	Clear	100 caps/pack, 10 packs/case
801220A	Red	100 caps/pack, 10 packs/case
801221A	Blue	100 caps/pack, 10 packs/case
801222A	Green	100 caps/pack, 10 packs/case
801229A	Amber	100 caps/pack, 10 packs/case
801230A	Orange	100 caps/pack, 10 packs/case
801231A	Yellow	100 caps/pack, 10 packs/case
801235A	White	100 caps/pack, 10 packs/case
801236A	Violet	100 caps/pack, 10 packs/case
801237A	Pink	100 caps/pack, 10 packs/case

Screw Cap Micro Tubes, Type S with Cap Attached

P / N	Cap Color	Configuration
8800401	Clear-White Coded Inserts	100 caps/pack, 10 packs/case
8800402	Red-White Coded Inserts	100 caps/pack, 10 packs/case
8800403	Blue-White Coded Inserts	100 caps/pack, 10 packs/case
8800404	Green-White Coded Inserts	100 caps/pack, 10 packs/case
8800405	Amber-White Coded Inserts	100 caps/pack, 10 packs/case
8800406	Orange-White Coded Inserts	100 caps/pack, 10 packs/case
8800407	Yellow-White Coded Inserts	100 caps/pack, 10 packs/case
8800408	White-White Coded Inserts	100 caps/pack, 10 packs/case
8800409	Violet-White Coded Inserts	100 caps/pack, 10 packs/case
8800410	Pink-White Coded Inserts	100 caps/pack, 10 packs/case

Screw Cap Micro Tubes, Type A with Cap Attached

P / N	Cap Color	Configuration
8800401A	Clear	100 caps/pack, 10 packs/case
8800402A	Red	100 caps/pack, 10 packs/case
8800403A	Blue	100 caps/pack, 10 packs/case
8800404A	Green	100 caps/pack, 10 packs/case
8800405A	Amber	100 caps/pack, 10 packs/case
8800406A	Orange	100 caps/pack, 10 packs/case
8800407A	Yellow	100 caps/pack, 10 packs/case
8800408A	White	100 caps/pack, 10 packs/case
8800409A	Violet	100 caps/pack, 10 packs/case
8800410A	Pink	100 caps/pack, 10 packs/case

Optional Colors for Screw Caps

various colors of the cap are available for the free combination and matching





Cryogenic Vials

Imported polypropylene (PP) material, complies with USP Class-VI standard  
Temperature range: -196°C~121°C, repeatable freeze-thaw  
Large white writing area, clearer printing of scale lines  
Ergonomic, smooth internal contours and residue-free sampling  
DNase-free, RNase-free, Pyrogen/Endotoxin-free  
High transparency for clear and easy observation.

Features

- High temperature and pressure resistance, can be repeatedly frozen and thawed
- Strong sealing to meet the safety of samples and experiments
- External/Internal rotation, various sizes available

Applications

Routine as well as demanding laboratory uses, including centrifugation, heating, incubation, freezing or sample storage.

Cryogenic vials (External-Thread)

Has a screw cap with external threads to reduce the risk of sealability



P/N	Capacity	Tube Color	Cap Color	Configuration
8230101P01	1.0 mL	Clear	Clear	50 pcs/bag, 10 bags/pack, 4 packs/case
8230301P01	1.8 mL	Clear	Clear	50 pcs/bag, 9 bags/pack, 4 packs/case
8230501P01	4.5 mL	Clear	Clear	50 pcs/bag, 6 bags/pack , 4 packs/case

Cryogenic vials (Internal-Thread)

Has a screw cap with internal threads and a silicone O-ring for tighter containment



P/N	Capacity	Tube Color	Cap Color	Configuration
8230201P01	1.0 mL	Clear	Clear	50 pcs/bag, 10 bags/pack, 4 packs/case
8230401P01	1.8 mL	Clear	Clear	50 pcs/bag, 9 bags/pack, 4 packs/case
8230601P01	4.5 mL	Clear	Clear	50 pcs/bag, 6 bags/pack , 4 packs/case

Cell Culture Products

Cell culture series are commonly applied in cell culture laboratories. CellPro has plasma surface treatment technology, more conducive to cell adherent growth. It is widely used in basic research of life science, cancer research, virus detection and diagnosis, genetic engineering, vaccine development and production and other fields.



Cell Culture Plates

Clear Multiwell Plate is comprised of clear TC-treated polystyrene. Flat bottom, with low evaporation lid, sterile. Convenient, peel-open medical-style packaging for individual product prevention.



Features

- Standard tissue culture (TC) treated
- Crystal-grade virgin polystyrene
- Flat well bottom and stackable
- Raised well rims to lower the risk of cross contamination
- Sterilized by gamma irradiation and non-pyrogenic
- Excellent optical effect
- Alphanumerical codes for well identification
- Round Well Styles with vented lids for gas exchange
- Recessed areas around wells act as a water reservoir to reduce evaporation
- Lids with notched corners for easy orientation



ISO 9001



ISO 14001



ISO 13485



CE



FDA



**CELLPRO<sup>®</sup><sub>BIO</sub>**

## CONTACT US

Phone-

+86-512-8066 7650

E-mail-

[info@cellprobio.net](mailto:info@cellprobio.net)

Website-

[www.cellprobio.net](http://www.cellprobio.net)

Address-

Building 1, CECEP (Suzhou) Environmental Technology Industrial Park, No. 18, Dongchang Road, Suzhou Industrial Park, Suzhou, Jiangsu, CHINA 215127

---

SUZHOU CELLPRO BIOTECHNOLOGY CO., LTD.

Number: CPE20230803